



v 1.0

## Simple Signer - Select a database and Sign ALL of its design elements

A deliberately simple FREEWARE tool - copyright 2006 Asia/Pacific Computer Services  
Makers of NotesTracker - the "universal enabler" for database usage tracking.

[asiapac.com.au](http://asiapac.com.au) or [notetracker.com](http://notetracker.com)

## CONSIDERATIONS

When an application is developed, it is a quite common requirement for it to have to be "signed" before it will operate correctly in a production environment. The developer(s) who created the various design elements in the database (forms, views, agents, etc) place their own "signature" against each design element every time it is saved. Often the developer signatures do not provide sufficient authority (for an agent to run on a Domino server, for formulae to execute in a form, etc), therefore the design elements need to be signed by a Notes ID with the appropriate authority. (Refer to the IBM Lotus Notes documentation for full details about the signing of databases.)

Although not all that difficult to do, this can be a somewhat circumspect process for the uninitiated! This single-purpose database was developed by Asia/Pacific Computer Services to make life a little easier for everybody. Its one and only design goal is to make it extremely easy to sign ALL of the design elements in a selected database. Note that it **works only in Notes 6.0 and later versions** (because it relies on the LotusScript "Sign" method introduced in Release 6.0).

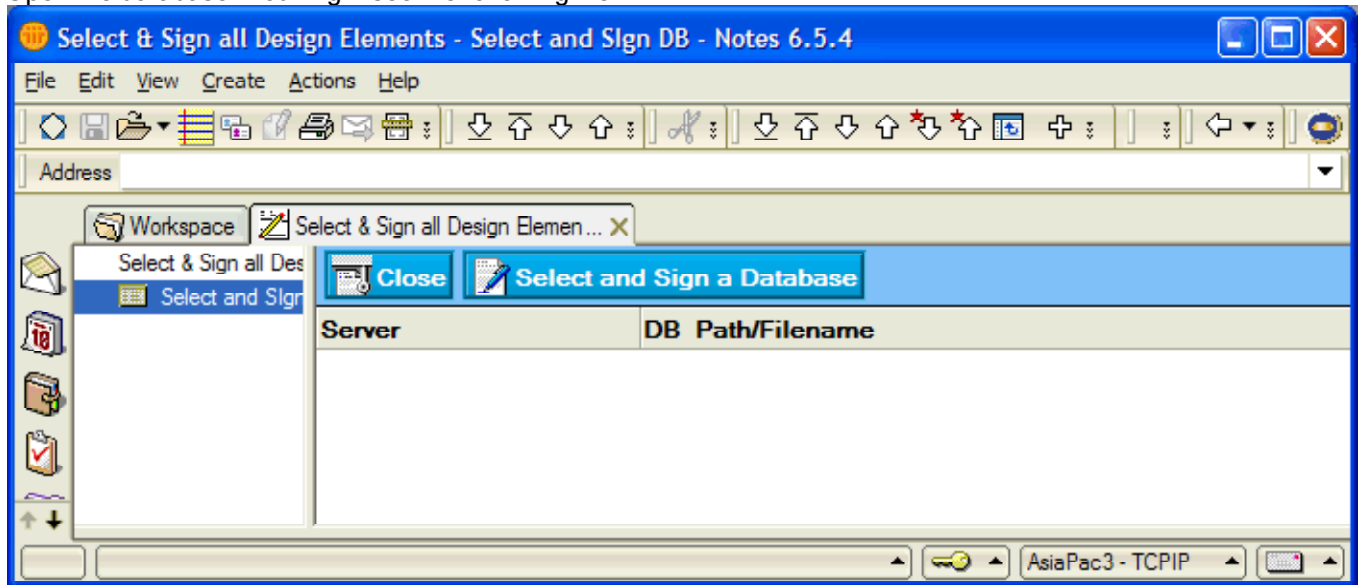
### A Programming Note

You could easily alter the code to sign specific types of design elements or specific named design elements, but the intent of this tool as distributed is to provide a simple approach that will suit many occasions.

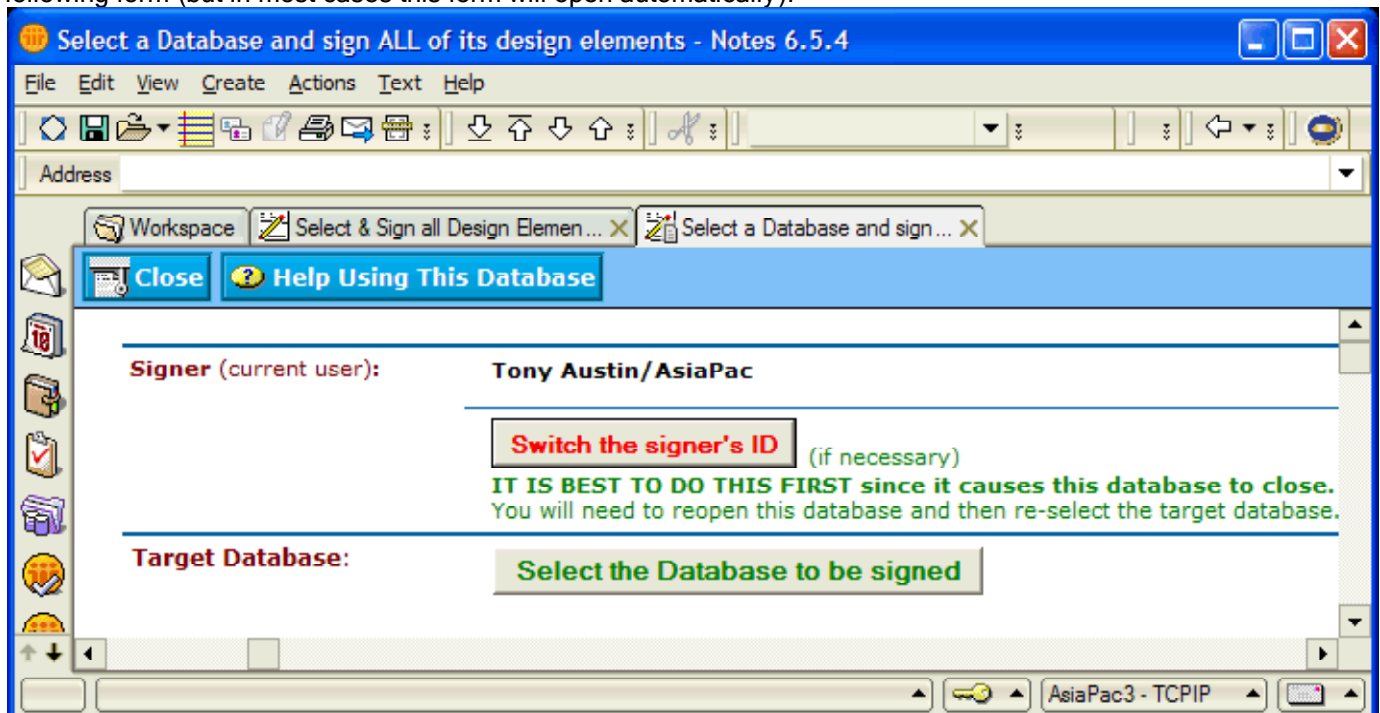
**To modify the signing scope:** use some other constant instead of DBSIGN\_DOC\_ALL (32767). Search the LotusScript Help for "Sign method" which will describe the other possibilities ...  
DBSIGN\_DOC\_ACL (64) signs the ACL, DBSIGN\_DOC\_AGENT (512) signs all agents,  
DBSIGN\_DOC\_DATA (1) signs all data documents' active content (hotspots), DBSIGN\_DOC\_FORM (4) signs all forms, DBSIGN\_DOC\_HELP (256) signs the "About Database" and "Using Database" documents,  
DBSIGN\_DOC\_ICON (16) signs the icon, DBSIGN\_DOC\_REPLFORMULA (2048) signs the replication formula, DBSIGN\_DOC\_SHAREDFIELD (1024) signs all shared fields, DBSIGN\_DOC\_VIEW (8) signs all views.

## HOW TO USE THIS DATABASE

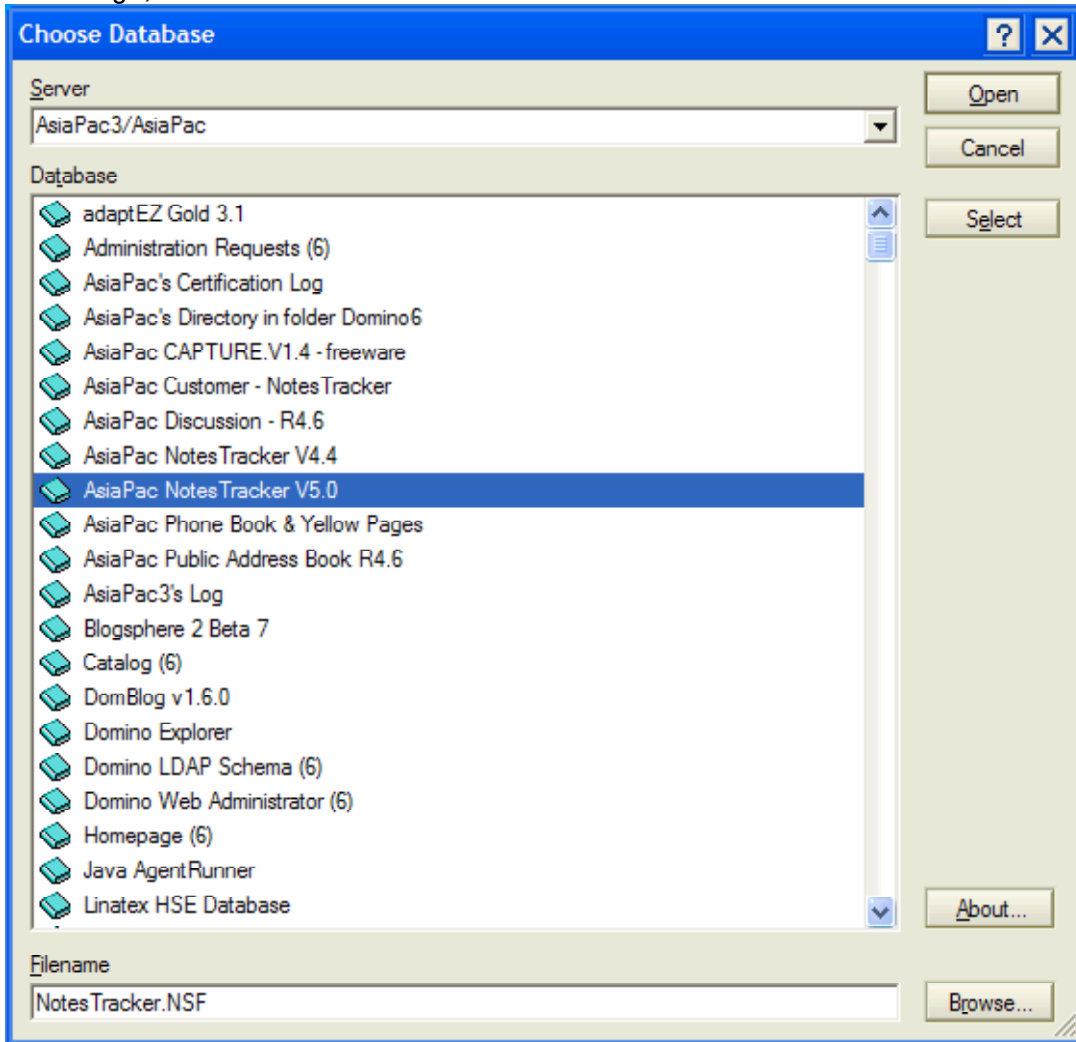
1. Open the database. You might see the following view:



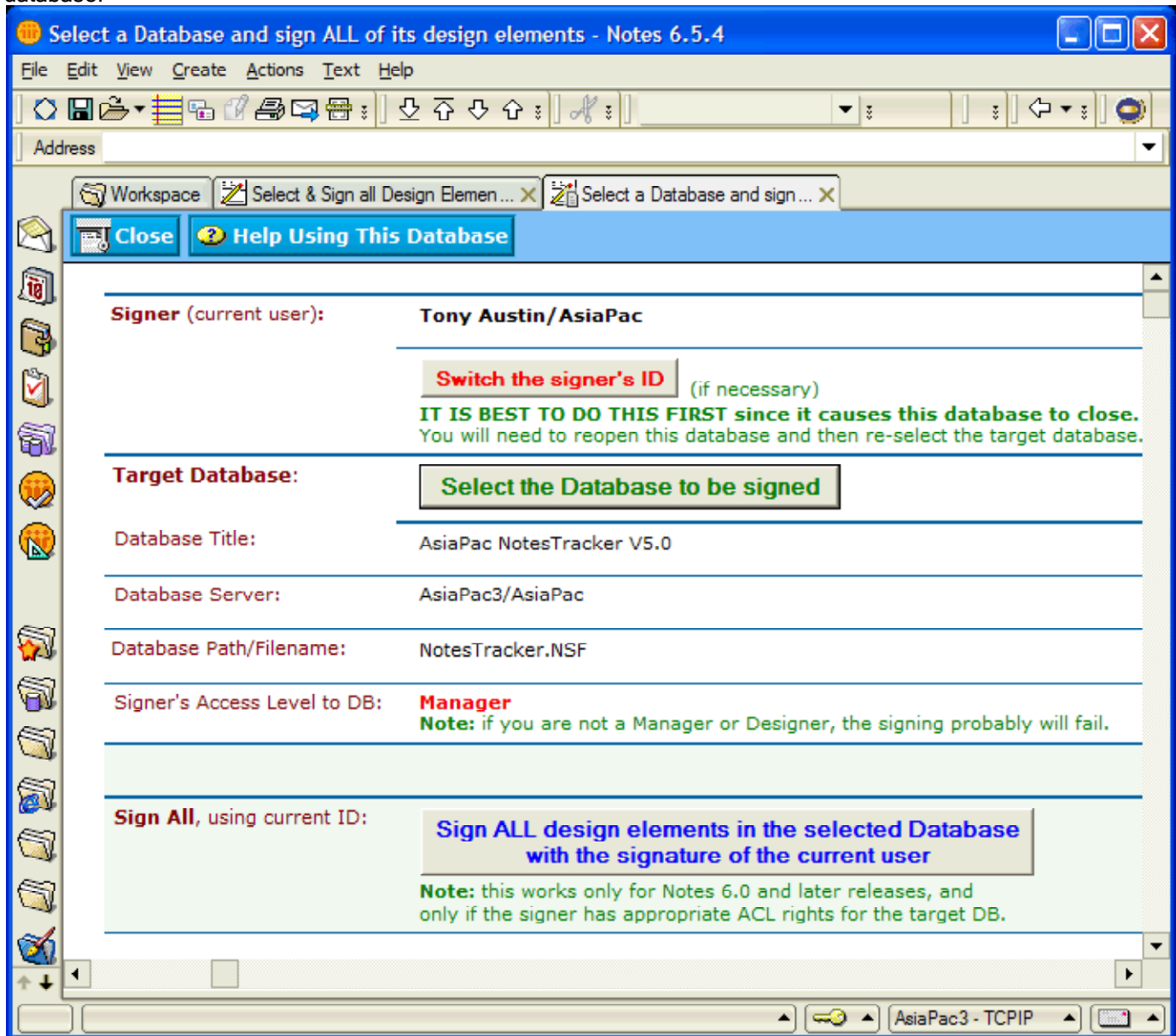
2. If you see the above view, click the button labelled **Select and Sign a Database** to open the following form (but in most cases this form will open automatically).



3. If it is necessary to sign the database with some other User ID, click the button labelled **Switch the signer's ID** to select it. Note that this forces this database to close, so you will need to reopen it before proceeding to the next step.
4. Use the button at top labelled **Select the Database to be signed** -- the "target" database that you wish to sign, which can be either local or on a Domino server:



5. If you are authorized to access the selected database, you now will see information about the database:

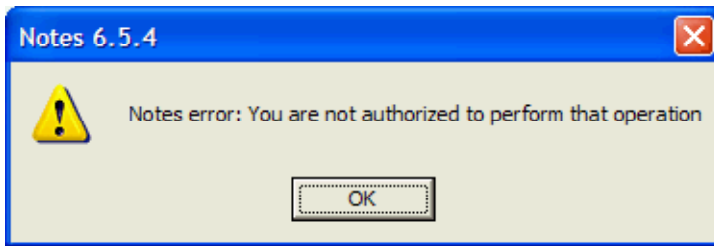


As well as the database's title, the server name (which could be "local") and the database's path/filename. you will see **your Access Level to the selected database**.

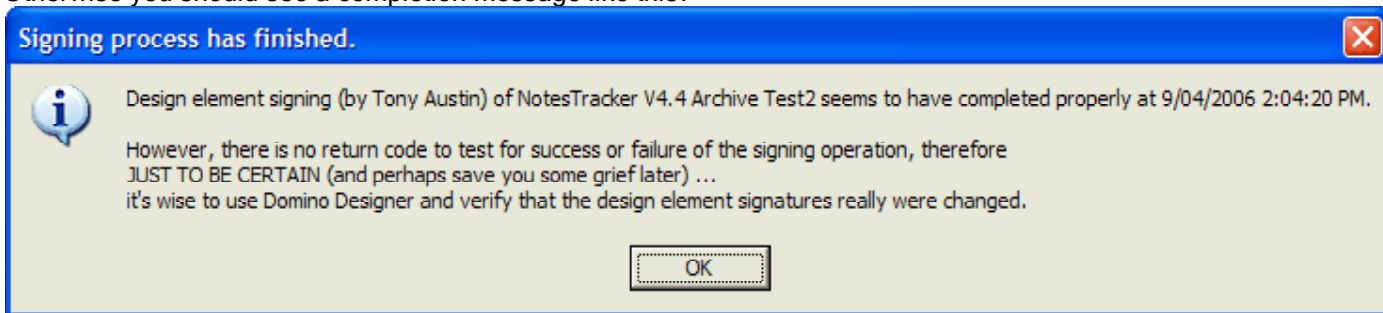
You need to be a Manager or Designer of a database in order to sign its design elements. Assuming that you are, then you may proceed to the next step.

6. Click the large button at bottom labelled **Sign ALL design elements** and wait for a short while (a matter of seconds).

7. If you are at a lower access level than Manager or Designer (such as Editor or Author) you will get an error message like this:



Otherwise you should see a completion message like this:



Follow the recommendation given. The signing process will succeed, more often than not (assuming that the signer has the required authority to the database).

=====  
**This is FREeware.**

You are free to copy this database and use its underlying design and code wherever and however you like. The only condition of any such use and deployment is that you acknowledge copyright and explicitly attribute this copyright notice in any derived works (free or commercial) -- no plagiarism please. We have put time and effort into coming up with this simple and easy-to-use design for your benefit. ENJOY!