

Netgear FR114P Print Server Installation for Windows XP

January 2007

This chapter describes how to install and configure the print server in your Netgear Firewall/Print Server Model **FR114P**.

Below, the LPR section for installation under Windows XP is emphasized, because the trying to set up and get a Netgear Printer Port Driver to work can be rather unreliable and time-wasting. (For example, after installing the port Windows XP's "Add Printer" wizard may not detect its presence.)

This information was extracted from Chapter 7 of the *Reference Manual for the ProSafe Wireless 802.11g Firewall/Print Server Model FWG114P*. The use of LPR does not feature in the FR114P documentation, or at least I didn't come across it before reading the FWG114P reference manual.

Printing Options

The FR114P supports these methods for printing:

- **For Windows XP and 2000 Only: TCP/IP Line Printer Remote (LPR) Printing**
 - No software needs to be installed
 - Windows XP or 2000 users can print directly to the firewall. Print jobs are spooled (queued) on each computer. The computer sends the print job directly to the LAN IP address of the FR114P.
 - **For Windows 95/98/Me, NT4.0, 2000, and XP: Netgear Printer Port Driver**
 - Install the Netgear Printer Port Driver on Each computer.
 - After installing the Print Port Driver from the *Resource CD for the ProSafe Wireless 802.11g Firewall/Print Server Model FR114P (SW-10023-01)* Windows users can print directly to the firewall. Print jobs are spooled (queued) on each computer.
 - **For Macintosh computers: LPR printing**
 - No software needs to be installed
 - LPR printing can be set up on any Macintosh that has Desktop Printing installed or available. Desktop Printing is supported on MacOS versions beginning from 8.1. LaserWriter8 version 8.5.1 or higher is also required.
 - **For Windows NT 4.0 Server or 2000 Server: LPD/LPR Printing**
 - No software needs to be installed
 - If using Windows NT 4.0 Server or Windows 2000 Server, LPD/LPR printing can be used. No software needs to be installed on either the Windows Server or each client computer. Print jobs will be spooled (queued) on the Windows Server, and can be managed using the standard Windows Server tools.
-

December 2003, M-10177-01

For Windows XP and 2000, Use TCP/IP LPR Printing

Follow these instructions to set up TCP/IP printing on your Windows XP and 2000 PCs.

1

Install the FR114P, connect your printer to the printer port on the FR114P, and run the Windows Add Printer Wizard.

- Follow the instructions in the printed Installation Guide or this manual to install your FR114P. Connect your printer to the printer port on the back of the FR114P.
- From the Windows Start menu of a computer connected to the FR114P, click **Settings > Printers and Faxes**.
- Click **Add a printer**. Click **Next** to proceed.
- Be sure to choose the **Local printer attached to this computer** option. Click **Next** to proceed.
- On the Select a Printer Port screen, be sure to choose the **Create a new port:** option.

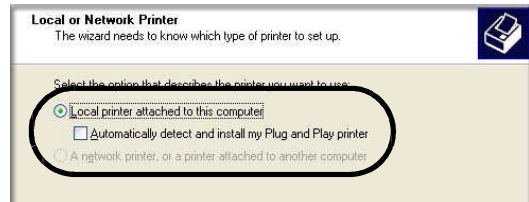
From the Type of port: drop-down list, be sure to select **Standard TCP/IP Port**.

Click **Next** to proceed.

This will start the Add Standard TCP/IP Printer Port Wizard.



Add Printer Wizard



Local or Network Printer screen



Select a Printer Port screen

2

Complete the Add Standard TCP/IP Printer Port Wizard.

- a. Click **Next** to proceed with the Add Standard TCP/IP Printer Port Wizard. The Add Port screen will display.
- b. From the Add Port screen, enter **192.168.0.1**, the FR114P default LAN IP address, in the IP Address field.
Note: If you changed the default LAN IP Address of the FR114P, be sure to use the address you assigned here. The Port Name is automatically filled in.

Click **Next** to proceed.

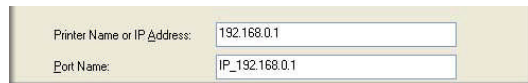
- c. In the Device Type section of the Additional Port Information Required screen, select **Custom**.
- d. In the Custom selection, click **Settings**.
- e. The Port Settings tab page opens. In the Protocol section, select the **LPR** radio button, and enter **FR114P** as the Que Name in the LPR Settings section. Click **OK** to close this tab page.

Click **Next** to proceed.

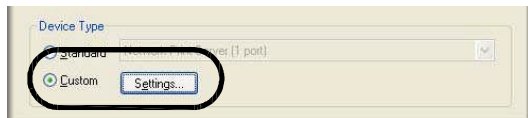
The Add Printer Wizard will now prompt you to install the software for the printer you attached to the FR114P.



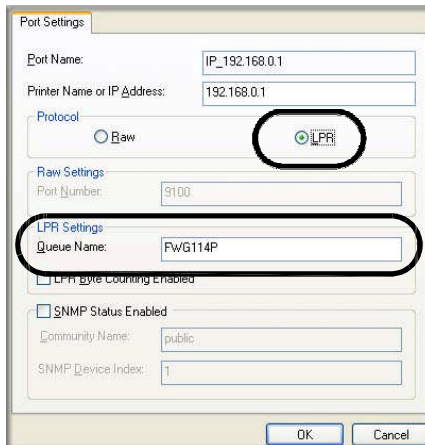
Add Standard TCP/IP Printer Port Wizard



Add Port Screen



Additional Port Information Required



Additional Port Information Required

3

Identify the printer connected to FR114P printer port.

- a. From the Install Printer Software screen selection lists, find the manufacturer and model of the printer you connected to the printer port on the FR114P.

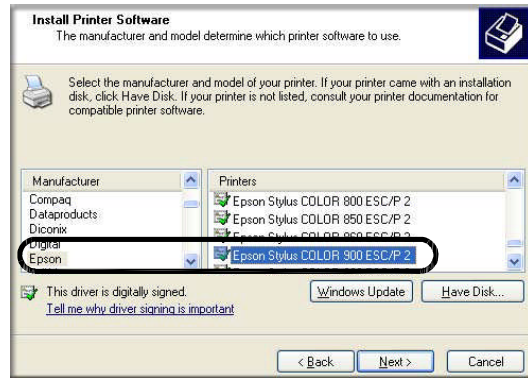
Click **Next** to proceed.

If the printer software is already installed on this computer, the Add Printer Wizard will inform you and let you keep the existing driver.

- b. The Name Your Printer screen prompts for a descriptive name and if you want it to be the default. Enter your choices.

Click **Next** to proceed.

- c. On the Printer Sharing screen, accept the “Do not share this printer” option and click **Next** to proceed.



Add Printer Wizard Install Printer Software page

If you do not see your make and model printer in the lists, and you are connected to the Internet, you can click the Windows Update button to download additional printer software from the Microsoft Web site, or you can click the Have Disk button to install the printer software from a disk you have.

4

Print a test page to verify successful printing on your network.

- a. Upon completion of the Add Printer Wizard, you will be prompted to print a test page.
- b. Check the printer attached to the FR114P to see that the test page printed successfully

If you are unable to print a test page, see [“Troubleshooting the Print Server“ on page -11.](#)



Note: If two long files are sent to the printer at once, Windows will pop up a print failure error message. This message can be ignored. The file will print once the printer finished printing the first file.

For Windows 95/98/Me, Use the Netgear Printer Port Driver

Follow these instructions to set up the Netgear Printer Port Drive on Windows 9x PCs.

1

Install the Netgear Printer Port Driver and configuration utility software.

- Follow the instructions in the printed Installation Guide or this manual to install your FR114P.
- Connect your printer to the printer port on the back of the FR114P.
- Insert the Resource CD for the FR114P into the CD-ROM drive of a computer connected to the FR114P.

The CD main page shown at the right will load.

- Click the **Print Server** button.

Follow the instructions for running the setup utility.

- Click **Next** to proceed through the Netgear Printer Port Installation Wizard steps.

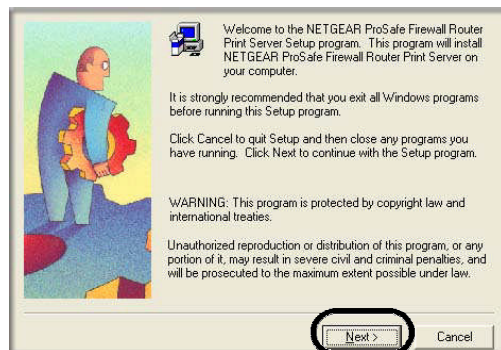
Note: Windows 2000 or XP may require you to be logged on with administrator rights.

Warning: If you are installing the Netgear printer port driver on a Windows computer where an Epson printer had been installed, you must disable the Epson Spool Manager. Failure to disable Epson Spool Manager software will prevent the Netgear printer port driver from operating.

To disable the Epson Spool Manager, run the Epson Spool Manager, select **Queue Setup** from the menu, click **Use Print Manager for this port**, and click **OK** to exit.



FR114P Resource CD



Netgear Printer Port Installation Wizard

2

Set up the Netgear printer port driver.

- a. Click **Finish** when the Installation Wizard is done.



Netgear Printer Port Installation Wizard

Note: Under Windows95, you may receive an error message stating that SETUPAPI.DLL was not found. In this case, you should upgrade your Internet Explorer to version 5 or later.

The Printer Port Setup utility displays, and queries the network to locate the print server in the FR114P.

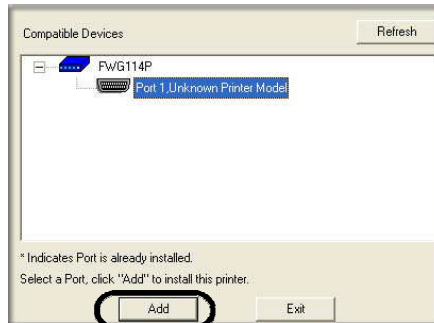
After a short delay, the Printer Port Setup utility will display the port it finds in the FR114P print server.

- b. Click **Add** to add this printer port to your computer.

The Printer Port Setup utility will report that Port FR114P_P1 has been added to the computer.

- c. Click **Exit** to exit the Printer Port Setup utility.

The Windows Add Printer Wizard automatically runs.



Netgear Printer Port Setup Utility

3

Identify the printer connected to the FR114P printer printer port.

- a. From the Add Printer Wizard screen selection lists, find the manufacturer and model of the printer you connected to the printer port on the FR114P.

Click **Next** to proceed.

If the printer software is already installed on this PC, the Add Printer Wizard will inform you and let you keep the existing driver.

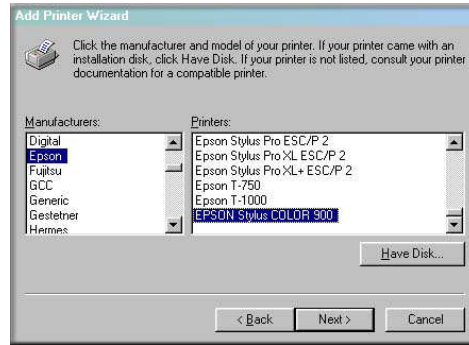
- b. Be sure to select the **FR114P_P1** port in the Add Printer Wizard.

Click **Next**.

- c. The Name Your Printer screen prompts for a descriptive name and if you want it to be the default. Enter your choices.

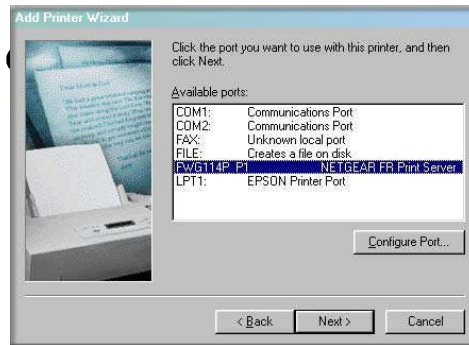
If prompted about Sharing, do not enable Sharing.

Click **Next** to proceed and finish the Add Printer Wizard steps.



Windows Add Printer Wizard

If you do not see your make and model printer in the lists, and you are connected to the Internet, you can click the Windows Update button to download additional printer software from the Microsoft Web site, or you can click the Have Disk button to install the printer software from a disk you have.



Windows Add Printer Wizard

4

Print a test page to verify successful printing on your network.

- a. Upon completion of the Add Printer Wizard, print a test page.
 - From the Windows Start menu, select Setup > Printers.
 - Highlight the printer you just added.
 - Right-click and the select **Properties**.
The printer properties dialog box opens to the General tab page.
 - On the General tab page, click **Print Test Page**.
- b. Check the printer attached to the FR114P to see that the test page printed successfully.

If you are unable to print a test page, see [“Troubleshooting the Print Server“](#) on page -11.