

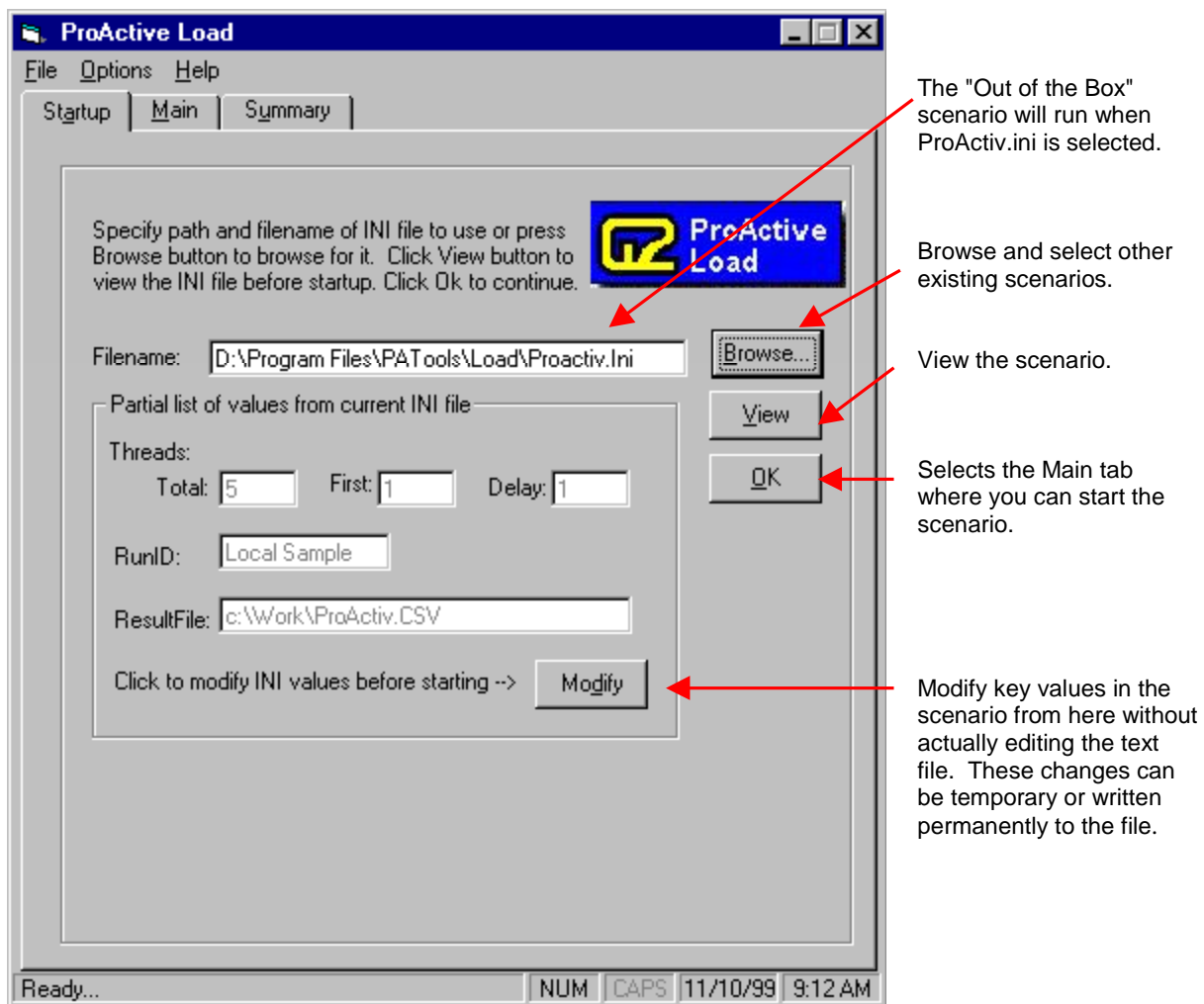
## ProActive Load™ Quick Start

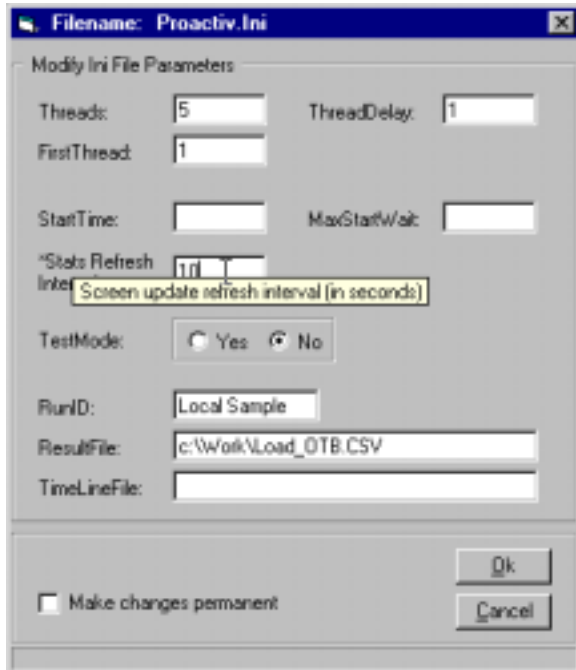
*Now that ProActive Tools is loaded and you have completed the ProActive Assistant Quick Start, proceed with the ProActive Load Quick Start.*

Use "**Quick Start**" to accelerate the learning process and shorten the time required to become proficient with ProActive Load. **Step 1** guides you through running the "Out-of-the-Box" scenario. Running this scenario indicates a successful installation and provides an overview of what ProActive Load does and how it works. **Step 2** guides you through simple modifications, which allow ProActive Load to run in your environment.

### Step 1 - Running the "Out of the Box" scenario

Launch ProActive Load via the shortcut created during installation. After the splash screen, Load opens as shown below. The first window on the Startup tab identifies which scenario Load will run. When you first run the product, Load defaults to a scenario named ProActiv.ini, which can be run "Out of the Box". In future runs, Load remembers the scenario last run, and places it in the Filename window as a default choice.



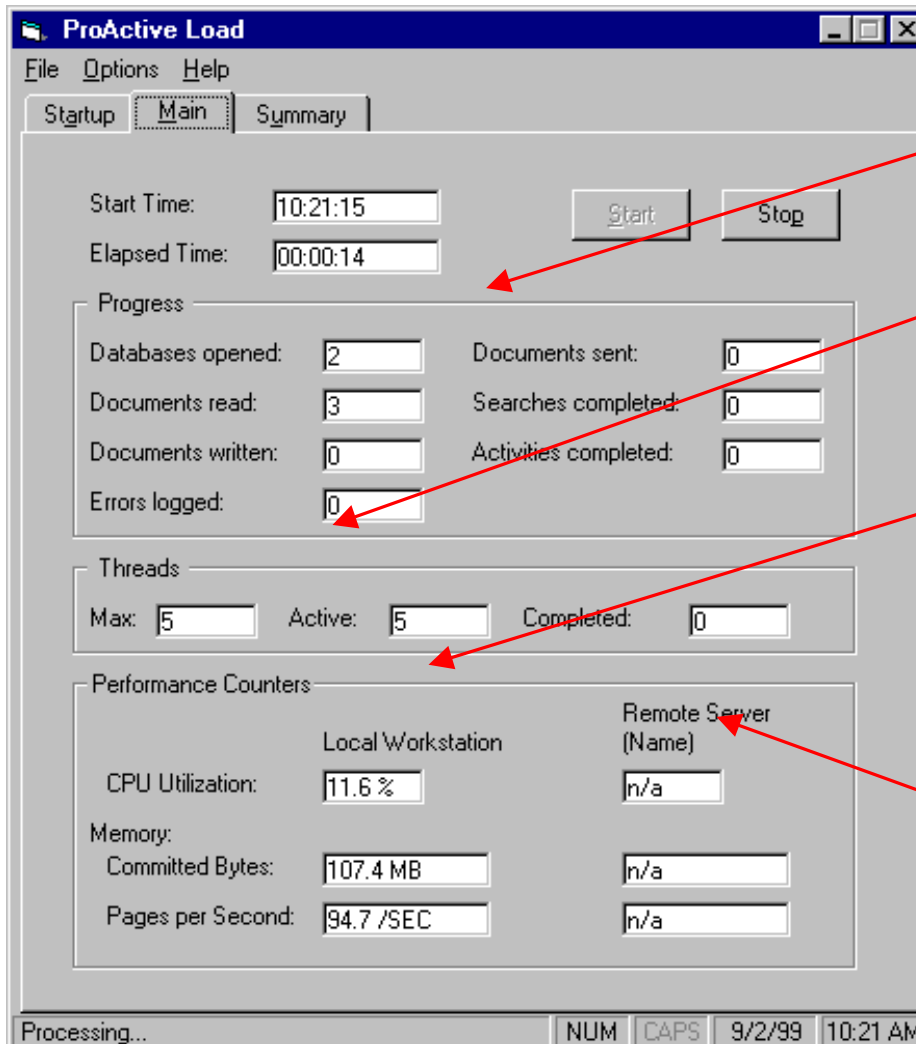


Click the **Modify** button to make changes to a set of commonly changed parameters in the scenario without using a text editor.

Change the Stats **Refresh Interval** from 10 to 1 second. This allows the progress of the scenario to be easily seen. In a real test, this value is set to 10 seconds or more, to minimize the impact on workstation resources. Click **Ok** to close the window.

Click **Ok** to move to the Main tab, or click the **Main** tab shown below. On the Main tab, push the **Start** button and the scenario will begin to run.

Values on the Main tab appear after the Start button is pushed. The scenario should run for about 1 minute. Let the scenario run to completion and then compare results with those shown on the Summary tab on the next page.



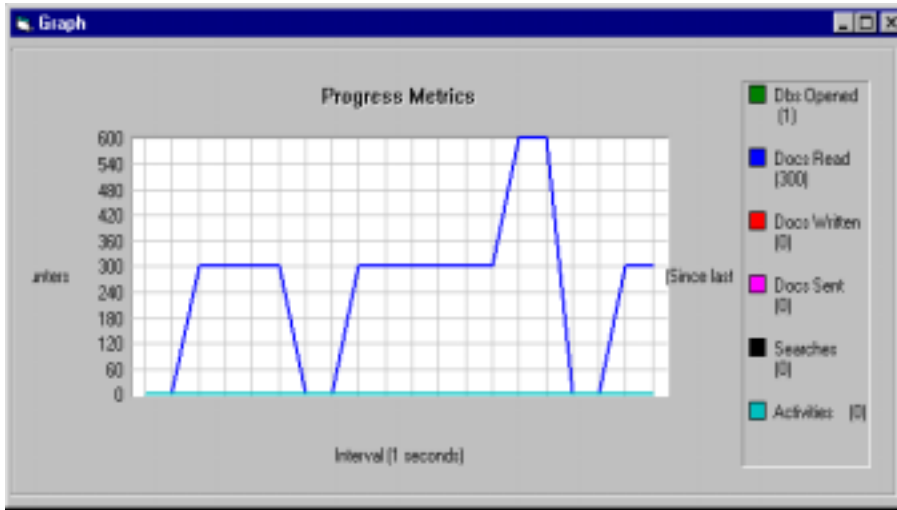
As the scenario runs, the *Progress* section monitors the amount of Notes work completed

The *Thread* section monitors the status of all threads running. When all threads have completed, the completion message below pops up.

When ProActive Load is running, the Local Workstation *Performance Counters* will display the workstation's memory and CPU utilization. The workstations are monitored to ensure that its capability is not exceeded, which may invalidate tests.

*Server counters* are monitored only if the NTServerName parameter in the scenario specifies a valid NT server name.

Once the execution of the scenario starts, a **Show Graph** button will appear on the Main screen just below the **Start** and **Stop** buttons. Click the **Show Graph** button to display the Graph window, shown



below, that charts the six progress counters on the Main screen. Once the Graph is displayed, the **Show Graph** button changes to **Hide Graph**. The graph window can be resized and moved as desired.

When the scenario completes, you are prompted to "view results". Click **Yes** to dismiss the message and move to the Summary tab.

When the "Out of the Box" scenario has finished running, the summary tab should look like the screen below. This simple test insures that ProActive Load is correctly installed on your system.

Click **Save Results** to save to a file or to print the summary information.

Summary information about multiple runs and comments can be appended to the same file.

The *Progress* section records the amount of Notes work accomplished by this run of the scenario.

After running the "Out of the Box" Scenario, Load should record 10 Databases Opened, 3000 Documents read, and 5 Activities completed.

The "Out of the Box" scenario runs 5 threads and each thread runs the TestRead activity. This activity reads 300 documents, and repeats 2 times because the NumSets parameter is set to 2.

## Step 2 - Modify the "Out of the Box" scenario to run against a Notes server.

The "Out of the Box" scenario can be modified to access Sample.nsf on a server simply by changing the value of the server parameter in the scenario, as shown below. Open and edit the file, named ProActiv.ini located in the Load directory, with Notepad or another editor.

After the server parameter has been changed, save the scenario with a new filename. Go back to the Load Startup tab and using the browse button, select the new scenario file. Go to the Main tab and start the scenario. Your scenario should run as before, but using the database on the server.

GENERAL SECTION		Global parameters
[General]		This parameter in brackets starts the General Section
RunID	= Local Sample	Identifier for reporting purposes
Path	= C:\Notes\data	Directories to search for files referenced in the scenario
Client	= @Notes.ini.KeyFileName	Reads the KeyFile parameter from Notes.ini
<del>Server</del>	= <del>Local</del>	Change Server parameter to your Notes server
Server	= XXXNotesServerName	Use this server unless specified otherwise in Activities
RunType	= Count	Can be Count or Timed - Count uses NumSets below
NumSets	= 2	Activities run 2 sets unless specified otherwise in Activities
ResultFile	= C:\Work\Load_OTB.CSV	Results are written to this file
TimeLineFile	= C:\Work\TimeLine.CSV	Reports what is happening on the server as Load runs
Threads	= 5	Total number of threads
ThreadDelay	= 1	Time (in seconds) to delay between starting each thread
FirstThread	= 1	Number of first thread - Subsequent threads increment by 1
Thread1-5	= Activity1	Assigns threads to Activity Sets
ACTIVITIES SETS		Controls the order of activities run
[Activity1]		Only 1 Activity Set - More can be added for variety
SleepTime	= 1-30	Random SleepTime from 1 - 30 seconds
Call	= TestRead	Routine is below
ACTIVITY ROUTINES		
[TestRead]		
Activity	= Read Documents	Type of Activity - Read Documents is a defined type
RunID	= ReadDocs	Identifier for reporting purposes
NumberOfDocuments	= 300	Number of docs read for each set
ReadTime	= 0	Random read time
View	= Intro PATools	Use this view
DBName	= Sample.nsf	Use this database

Experiment with other parameters in this scenario to gain understanding of Load's features and how they work before building complex scenarios.

### Contact Us

Contact us with questions about installation, or using ProActive Tools. We can help you determine how to use our tools in your environment.

**US** - 800-884-5876

**International** - 703-288-2944

**Email:** [ProActive@G2Sys.com](mailto:ProActive@G2Sys.com)